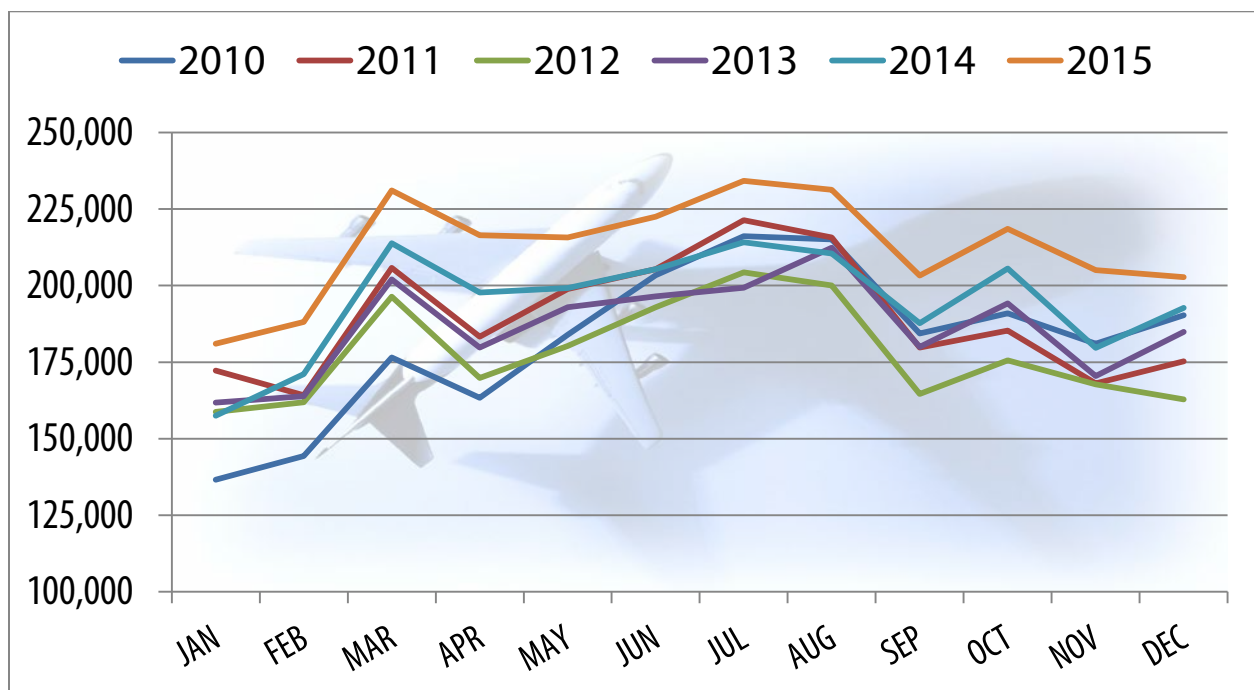


January 19, 2016

Contact: Tara Hernandez, Marketing & Communications Manager  
(616) 233-6053 or [thernandez@grr.org](mailto:thernandez@grr.org)

## Gerald R. Ford International Airport Sets New Passenger Record



**Grand Rapids, Mich.** – The Gerald R. Ford International (GFIA) Airport has set a new all-time passenger record for 2015, surpassing the previous record in 2014 by more than 215,000 passengers.

In 2015, 2,550,193 passengers flew in and out of GFIA, an increase of 9.2%. Each month in 2015 recorded substantial increases in passengers when compared to 2014 when the previous record of 2,335,105 passengers was set. Over the past three years, the Airport has recorded its strongest growth in its 52-year history, serving over 7.1 million passengers over the three-year time period.

“The past few years have been tremendous for the Gerald R. Ford International Airport, and we could not be more thrilled by the support received from our area business and leisure travelers who are choosing to fly to and from the Ford Airport,” said GFIA Executive Director Brian Ryks.



“The strong growth is also drawing the attention of our airline partners as we work with them to add seats and flights to both existing and new destinations, and also further justifies the need for our Gateway Transformation Project to accommodate the increasing passenger demand.”

Gateway Transformation Project construction began in December 2015 and is slated to continue through summer 2017. The project’s main feature is the consolidated passenger security checkpoint which will centralize and combine security screening to one main checkpoint in the Airport, eliminating separate screening for passengers traveling through either Concourse A or B. Construction also includes new terrazzo flooring, lighting fixtures, restroom & lactation stations, family restrooms, pre and post security business centers, new retail and food & beverage space, and much more.

“As we continue to grow in traffic it is important that our facilities keep up with our passenger demand,” said Ryks. “Our investment in this project represents our commitment to improve amenities, infrastructure, technology, and customer service from our growing passenger base.”

In July 2015, 234,282 total passengers passed through GFIA, the best month in Airport history. November 2015 was also a historic month as GFIA saw 205,088 passengers enplaned and deplaned – a 14.16% increase, and the first year that the Airport served more than 200,000 passengers in November.

The Airport will be celebrating this historic passenger record with daily surprises and giveaways by ‘paying it forward’ to passengers through next week. GFIA Facebook ([www.facebook.com/GeraldRFordInternationalAirport](http://www.facebook.com/GeraldRFordInternationalAirport)) and Twitter (@FlyGRFord) will have updates on these promotions.

GFIA monthly passenger statistics are available on our website: <http://www.grr.org/History.php>

For more information or interviews, please contact Tara Hernandez.

###