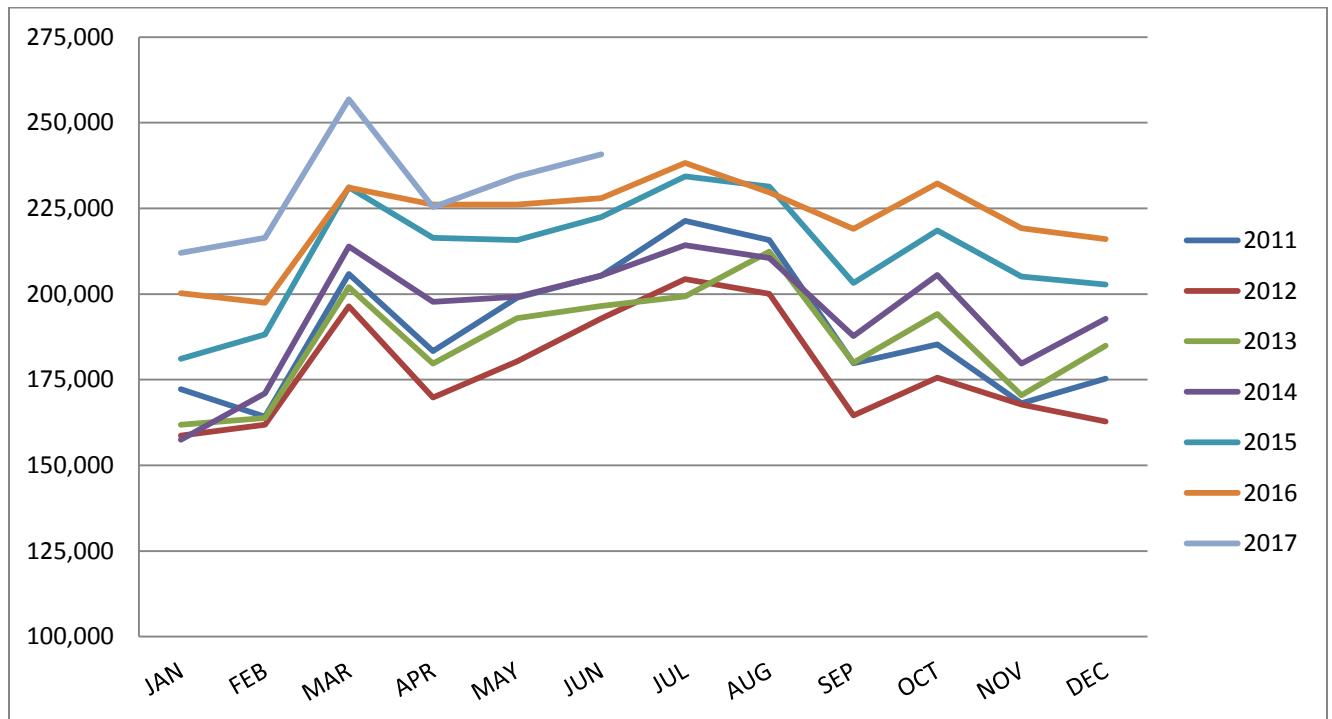


July 12, 2017

Contact: Tara Hernandez, Marketing & Communications Director  
(616) 233-6053 or [thernandez@grr.org](mailto:thernandez@grr.org)

## Gerald R. Ford International Airport Sets More Passenger Records in June



**Grand Rapids, Mich.** – June 2017 was the busiest June on record at the Gerald R. Ford International (GFIA) Airport, coming off a March that was the single busiest month in airport history.

June 2017 passengers were up 5.59 percent year-over-year, not only resulting in the busiest June ever, but also securing the title of busiest second quarter in airport history by over 30,000 passengers; and the busiest overall quarter ever serving over 700,452 passengers since the beginning of the year.

“We are halfway through 2017 and already seeing incredible record-breaking statistics,” said GFIA President & CEO Jim Gill. “This is a testament to our region, and our growing community along with our airline partnerships. Not only does this June go down in airport history, but 2017 now holds the title for busiest first half ever beating out 2016 by over 86,000 passengers.”



Each month of 2017 has resulted in record-breaking passenger numbers, and the Airport has seen ten straight months of record growth.

Through June 2017, GFIA has served 1,385,730 total passengers – up 6.6 percent from 2016.

“The first phase of our Gateway Transformation Project will be complete at the end of summer, and we’re excited to see what the combination of this redesign along with the growing business in West Michigan does for our numbers,” said Gill. “We hope our continued growth prompts more nonstop service, and more options for those travelers who keep supporting us to achieve these record-breaking stats.”

Gateway Transformation Project construction began in December 2015 and is slated to continue through summer 2017. The project’s main feature is the consolidated passenger security checkpoint which opened in June, and centralizes security screening to one main checkpoint in the Airport. Construction also includes new terrazzo flooring, lighting fixtures, kids play areas, restroom & nursing room, family restrooms, pre and post security business centers, new retail and food & beverage space, and much more.

GFIA monthly passenger statistics are available on our website: <http://www.grr.org/history.php>

For more information or interviews, please contact Tara Hernandez.

###

### **About GFIA**

The Gerald R. Ford International Airport (GFIA) is the second busiest airport in Michigan. The airport served over 2.6 million passengers in 2016 and over 7,000 travelers pass through GFIA each day. The Gerald R. Ford International Airport offers nonstop service to 24 major market destinations with more than 120 daily nonstop flights. The Gerald R. Ford International Airport is managed and operated by the Gerald R. Ford International Airport Authority. GFIA generates over \$3.1 billion in annual economic output throughout West Michigan, and employs over 1,500 people. For more information on GFIA visit: [www.flyford.org](http://www.flyford.org) or follow the airport on Twitter: @FlyGRFord