



TO: Vendors

FROM: AJ Nye – Procurement Specialist

Subject: RFQ 2410 On Call Landside Engineer - Addendum 1 – Pre-Submission Conference

Date: 10/16/2024

The Gerald R. Ford International Airport Authority issues Addendum 1 for Request for Qualifications 2410 On Call Landside Engineering Services. This addendum covers:

- Pre-Submission Meeting Agenda
- Slide Deck
- Sign-In Sheet
- Q&A From Meeting

Due date and time remain unchanged for October 24, 2024 at 2 pm local.

Thank you.

[End of Addendum]



RFQ 2410 Pre-Submission Conference 10/15/24, 10:30 am

1. Introductions - AJ

- Casey Ries – GFIAA Chief Asset Development Officer
- Jack Bryan – GFIAA Assistant Project Manager
- Tom Cizauskas – GFIAA Business Administration Manager
- AJ Nye – GFIAA Procurement Specialist

2. RFQ Overview – AJ

Solicitation Schedule	
RFQ Issue Date	October 8, 2024
Question Deadline	October 17, 2024
Submission Due Date	October 24, 2024, at 2 pm

Submission Format:

Electronic via dropbox link online or in RFQ Document

3. Project Overview - Casey

- Airport Needs
- Project List
- On-Call Engineering Services Contract

4. Questions - AJ

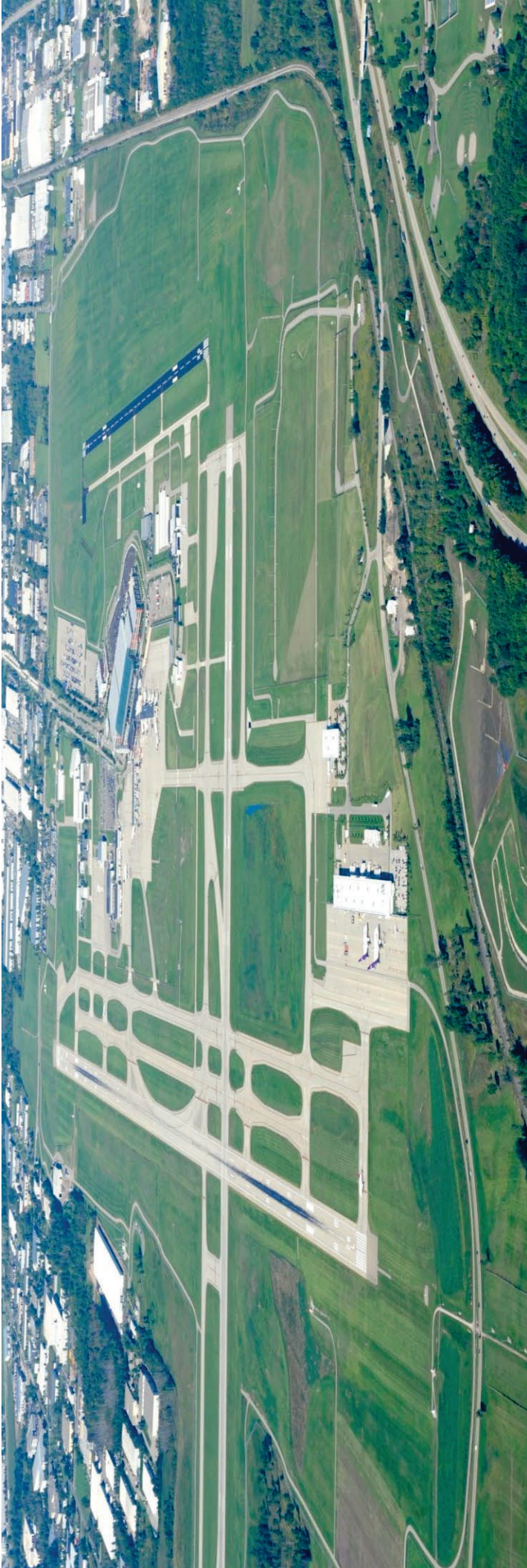
MEETING NOTES:

Landside On-Call Engineering Services

Request #2410

SOQs due October 24, 2024 – 2:00 pm local





GRR Fast Facts

- 2nd Largest Airport in Michigan
- 3.59 Million Passengers in 2019
- 1.76 Million Passengers in 2020
- 2.93 Million Passengers in 2021
- 3.47 Million Passengers in 2022
- 3.79 Million Passengers in 2023
- 3,200 Acres of Land
- \$7.7 B+ of Economic Impact
- Over 100 Businesses Supporting 2,500+ Direct Jobs

GFIA Economic Impact Highlights

40,000 JOBS

SUPPORTED IN WEST MICHIGAN

\$7.7 BILLION

ECONOMIC IMPACT IN WEST MICHIGAN

\$1.3 BILLION

CATALYTIC IMPACT ON HOUSEHOLD INCOME

Economic Service Area

The Gerald R. Ford International Airport is based in Kent County, Michigan, and primarily serves the 13-county West Michigan Economic Development Region. This includes Allegan, Barry, Kent, Ionia, Lake, Mason, Mecosta, Montcalm, Muskegon, Newago, Oceana, Osceola, and Ottawa counties.

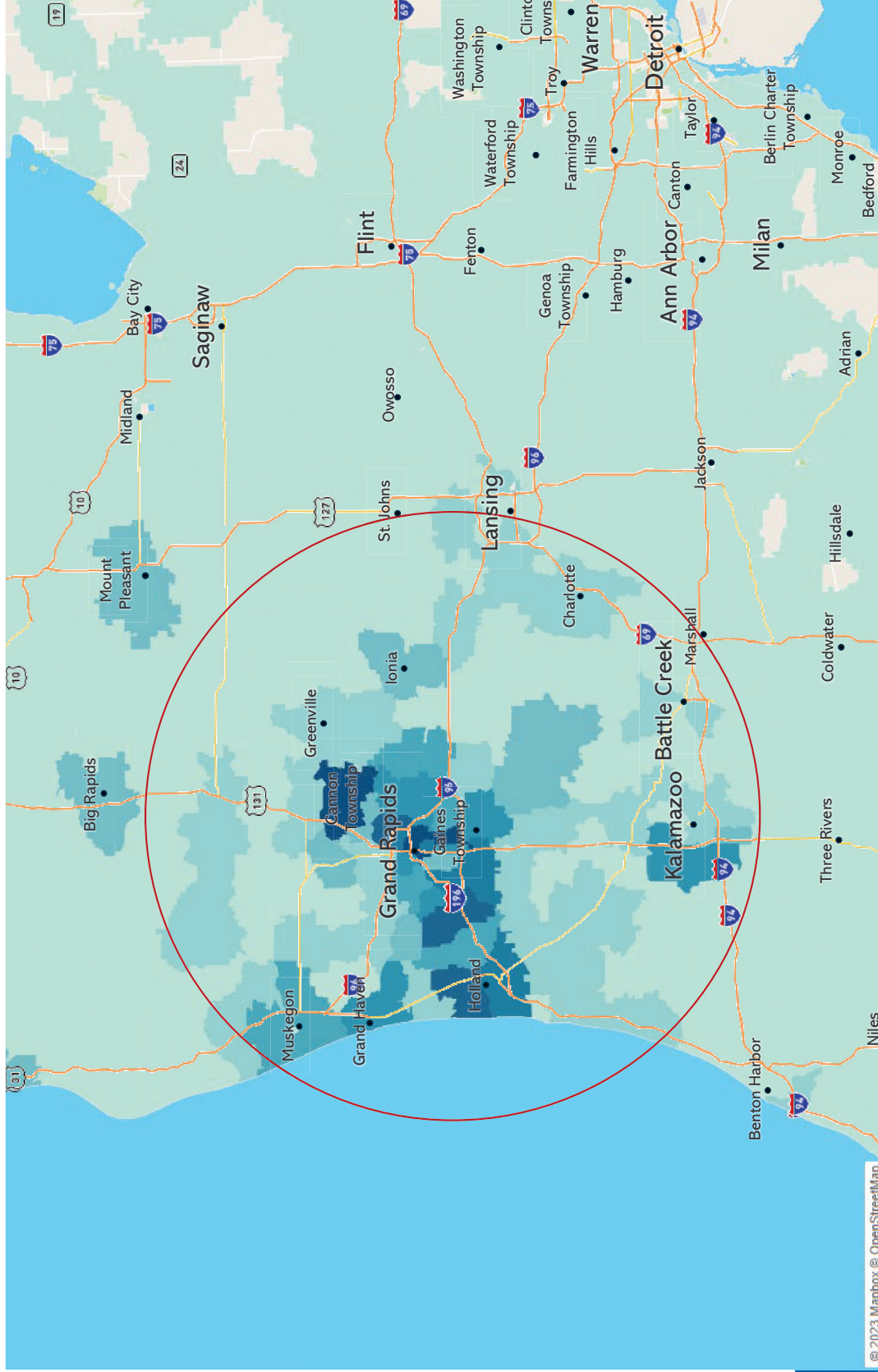
West Michigan Economic Region By The Numbers:

- Population: 1,627,734
- Average Annual Growth Rate (2013-2020): 0.75%
- Median Household Income: \$58.5K

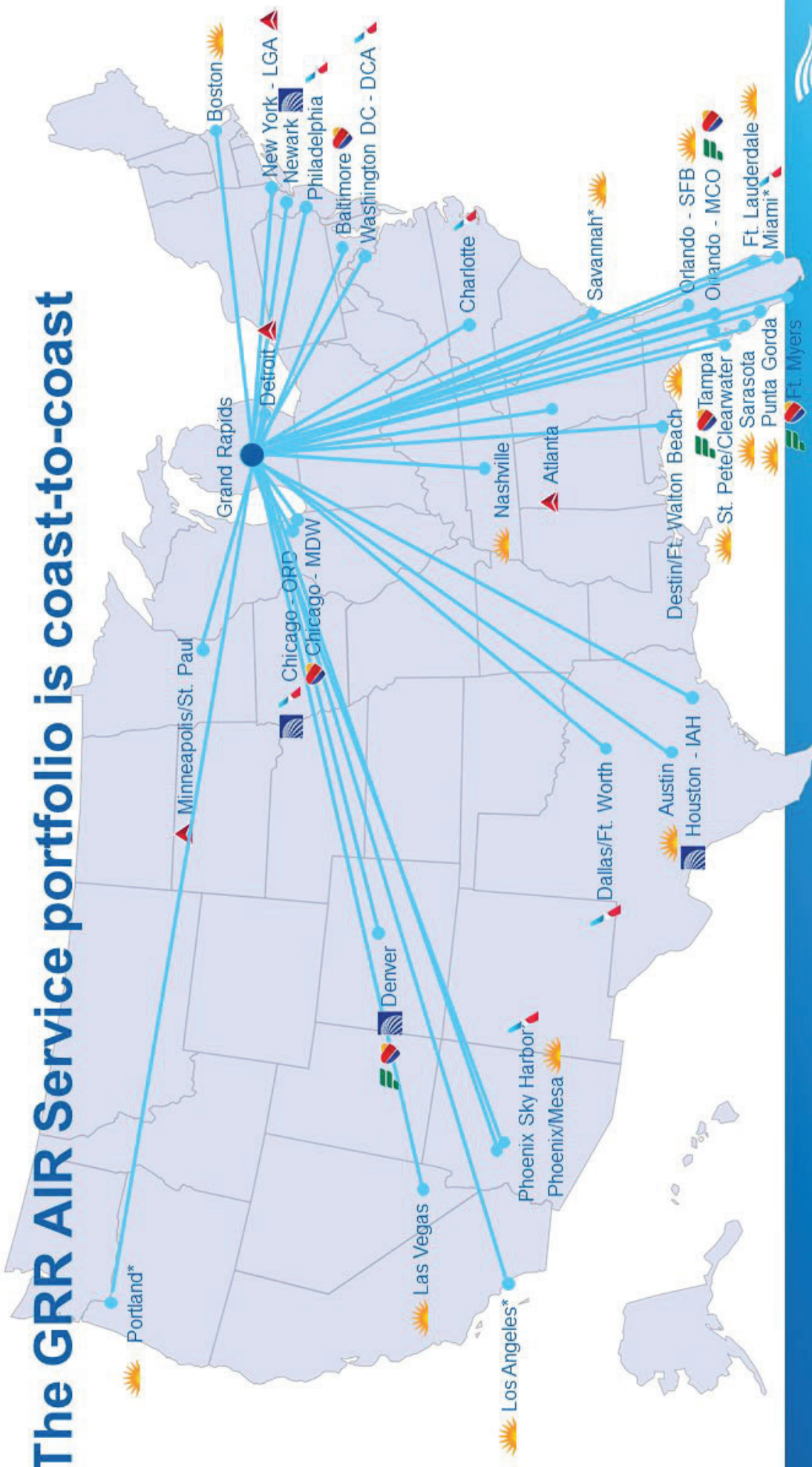
• *WM Regional Dashboard - 2020 - The Right Place*



GRR Originating Passengers



The GRR AIR Service portfolio is coast-to-coast



Guest Experience



GERALD R. FORD INTERNATIONAL AIRPORT
- Grand Rapids, USA



One of

THE LARGEST CAPITAL EXPANSIONS IN THE U.S.

for a small-hub airport

 ELEVATE



On-Call Landside Engineering: RFQ Work Scope

Past and typical projects the Consultant team may be assigned include the following:

1. Assisting the Airport Authority in various investigations and report submittals, including determination of need, preliminary estimates, and a recommended schedule of completion.
2. Preparation of preliminary plans and estimates for various improvements.
3. Preparation of final plans and specifications, final cost estimates, and assistance with bidding various improvements.
4. Construction engineering services, including inspection, contract administration, materials testing, and preparation of as-built drawings.
5. Providing ancillary services such as surveying, geotechnical, or materials testing. The Consultant may be asked to coordinate the acquisition of non-traditional services required by the Airport.
6. Assistance with identifying, securing, and fulfilling state and federal grant opportunities.

*** Please note, this RFQ does not include projects that are related to architectural infrastructure, such as vertical construction, MEP, interior design, building code review, etc.**

On-Call Landside Engineering: RFQ Work Scope

Future Projects we have identified for the chosen respondent to work on include but are not limited to:

PROJECT	EST. TIMING
Corporate Dr. Rehab	2025
Oostema Drive Sidewalk	2025
Viewing Park Expansion	2025-2027
Landside Roadway and Sidewalk Lighting	2025-2027
Non-aeronautical site preparations (Ex: Grading, Drainage, Utilities)	2025-2029
Field Maintenance Building Entry Road Rehab	2026
Roadway and Traffic Flow Analysis and Improvements	2026-2028
Ross Dr SE Rehab	2027
Van Laar Dr Rehab	2027
Old Thornapple River Dr SE Rehab	2028
Misc. Parking Lot Developments	TBD

This list has been revised from the originally posted RFQ.

SOLICITATION AND PROJECT SCHEDULE

ACTIVITY	DATE
RFQ Issue Date	October 8, 2024
Question Deadline	October 17, 2024
Submission Due Date	October 24, 2024 at 2 pm

GFIAA reserves the right to modify the deadline set forth in the above table in its sole discretion. Any such modifications will be stated in an addendum.

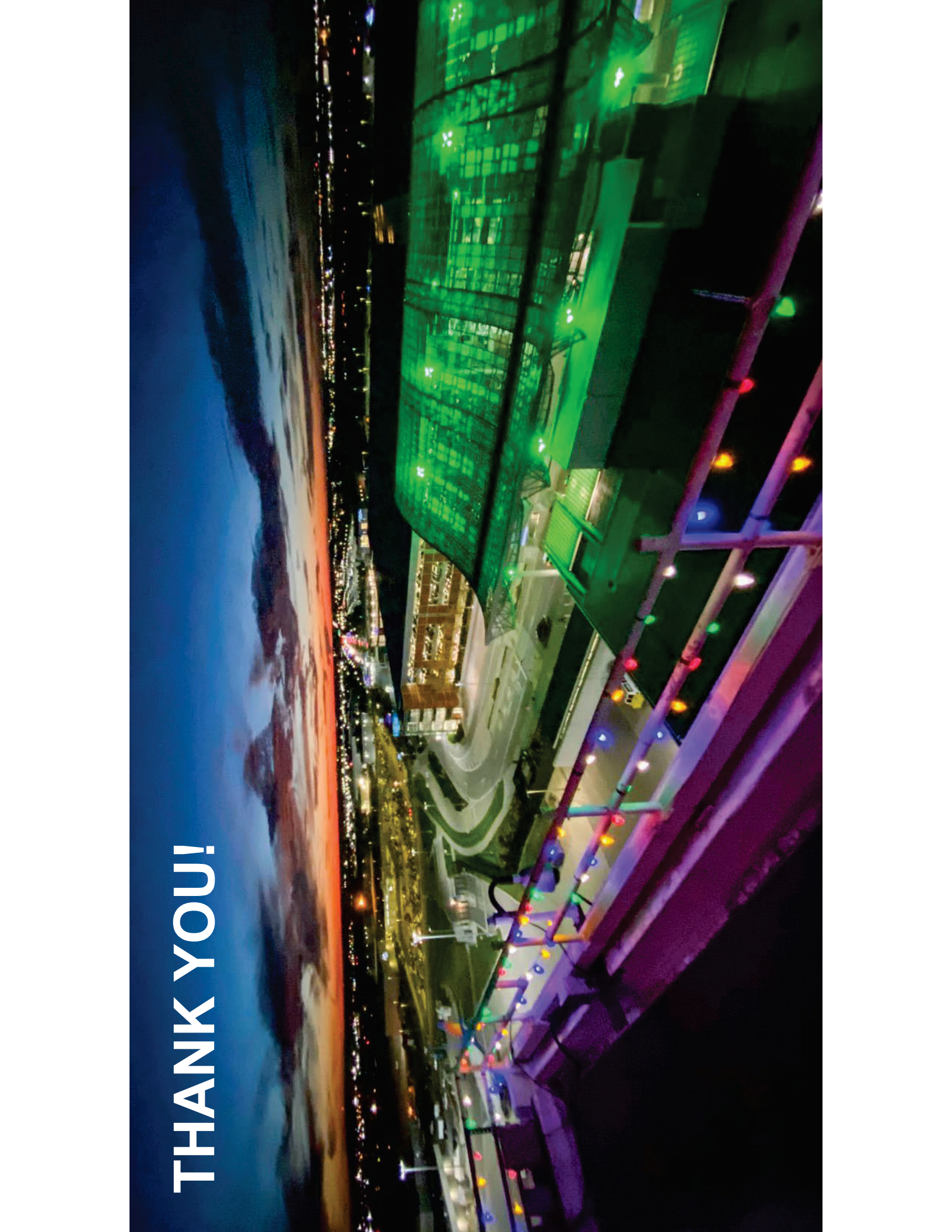
Landside On-Call Engineering Services

Request #2410

SOQs due October 24, 2024 – 2:00 pm local



THANK YOU!



	Business Name	Attendee	Email
1	FEHBECK	ADAM MEERER	AKMEEK@FEHBECK.COM
2	Jenni Warnimont ↔ STEVIE BISHOP	Kimley-Horn	jenni.warnimont@Kimley-Horn.com
3	STEVIE BISHOP	STEVIE BISHOP	SBISHOP@FVENG.COM
4	HRC	Eric Lipan	elipan@hrcengr.com
5	Materials Testing Consultants	Jami Nyhuis	jnyhuis@mtc-test.com
6	Smart Engineering	Jenni for Schmütz	j.schmuetz@smarteng.com
7	PREINNEUBAU	JOHN STROO	jstroo@preinnewbau.com
8	WSP	Kelly Ferencz	kelly.ferencz@WSP
9	GRR	Tom Lewiskas	tl@transloc.org
10	Progressive Companies	Mike Dezo	mdezo@weareprogressive.com
11	" "	Cecile Ruetk	Cecile@weareprogressive.com
12	SPARK 43	John Whitten	john@spark43arch.com
13	CHAD RATAJA		
14	BENESCH	CHAD RATAJA	crajala@benesch.com
15			
16			
17			



SIGN IN SHEET
RFQ 2410 – Pre-bid Meeting
October 15, 2024 @ 10:30 am

	Business Name	Attendee	Email
18	Progressive Companies	Chris Zull, Mike Cezer Carrie Rivette	CZull@weareprogressive.com M Cezer@weareprogressive.com
19			
20			
21			
22			
23			
24			
25			
26			
27			
28			
29			
30			
31			
32			
33			

RFQ 2410 Pre-Submission Q&A

1. Is there any overlap with the other on call contracts?
 - a. Not by design. There may be limited but not typical.
2. Does this include a real estate consulting component?
 - a. Not included in this RFQ scope.
3. Is the developer led work subject to local zoning?
 - a. Yes, Cascade Twp mainly.
4. Who dictates the design standards for the roadways?
 - a. While airport standards exist, KCRC standards apply to Oostema and other roads.
5. Does the GFIAA own the water supply?
 - a. City of Grand Rapids provides water and sewer services.